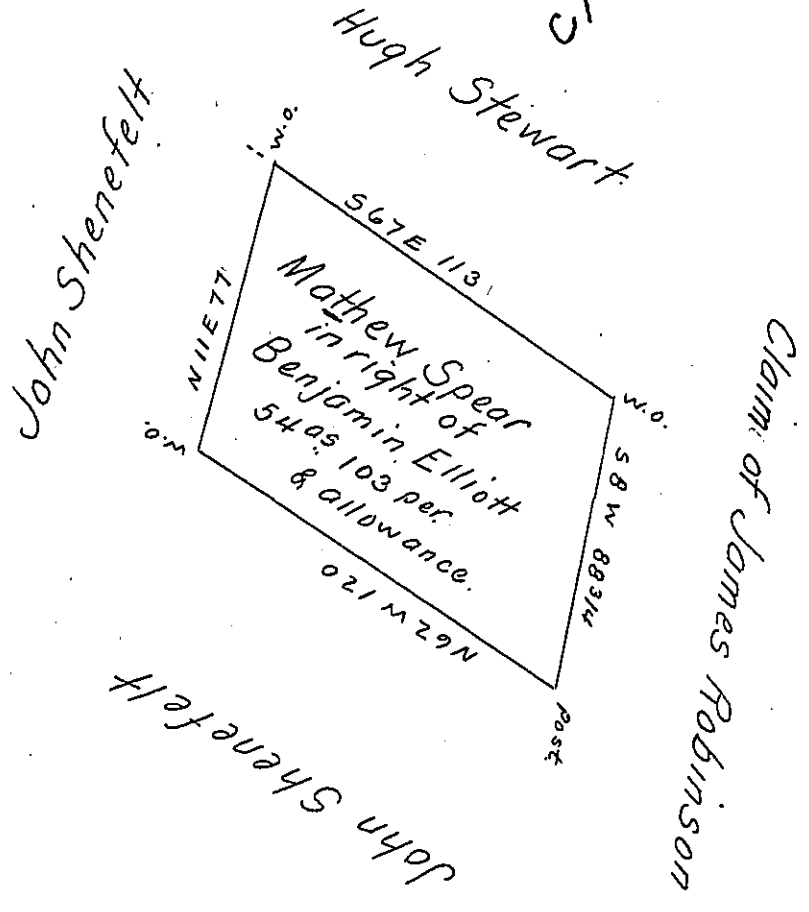


C/94-112



Draught of a tract of Land Situate in Montgomery Township Frank-  
lin County Pa. Surveyed for Mathew Spear. ~~Survey~~ August 24<sup>th</sup> 1796  
in pursuance of a Warrant granted to Benjamin Elliott dated  
October 28<sup>th</sup> 1786.

To Surveyor General. Mathew Henderson D.S.

Chambersburg Feb. 8<sup>th</sup> 1864

Hereby Certify that the above is a Correct and true Copy  
from the original Survey remaining in this office ~~by~~

Emanuel Kuhn C.S.

IN TESTIMONY that the above is a copy of the original remaining on file in  
the Department of Internal Affairs of Pennsylvania, made  
conformably to an Act of Assembly approved the 16th day of  
February, 1833, I have hereunto set my Hand and caused  
the Seal of said Department to be affixed at Harrisburg,  
this fourteenth day of September 1905.

*Isaac R Brown*  
Secretary of Internal Affairs.